

# SLIDING GLASS DOOR

ES-EL400



## System Description

- Large missile impact.
- Frame depth: 4 9/16", 5 11/16" (3 Tracks), 7 1/2" (4 Tracks)
- Frame sight line: 3 13/16"
- Sill height: 2" (standard), 2 5/8" (with sill raiser).

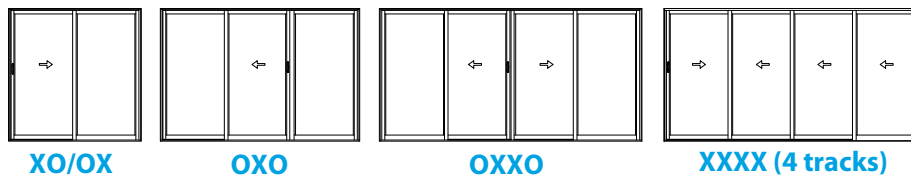
## Features

- Reinforced interlocks.
- Optional sill raiser.
- Two point lock.
- Three and four tracks frame.
- Optional screen for two tracks frame.

## Test

- Air infiltration: 6.24 psf
- Water infiltration: 12 psf
- Design load: +80 - 80 psf with reinforcement. +60-60 W/O reinforcement

## Configurations

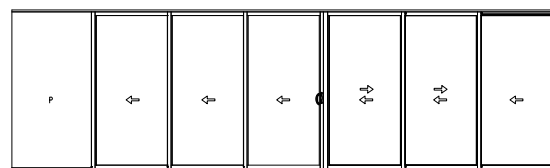


XO/OX

OXO

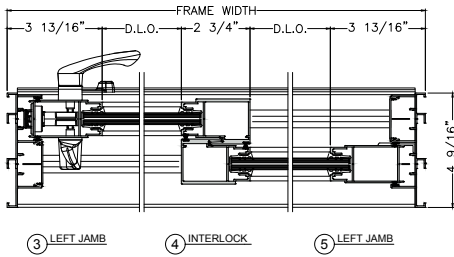
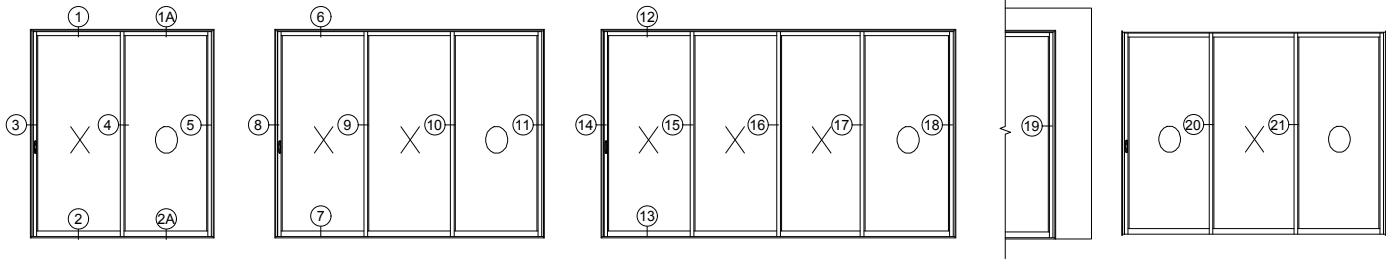
OXXO

XXXX (4 tracks)

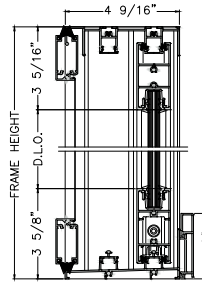


POCKET XXXXXX (3 TRACKS)

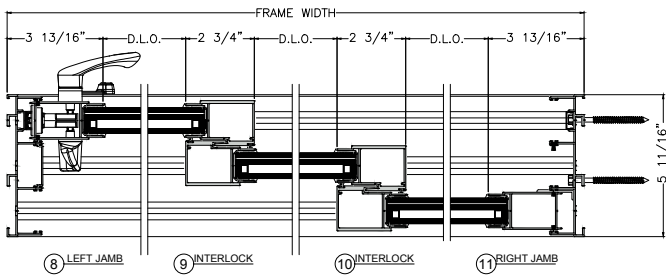
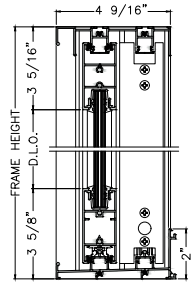
Configurations: XO/OX, XX,PX,XP, OXO (Left),OXO (Right), OXX (3 Tracks), XXO (3 Tracks), PXXX(3 Tracks), PXXXXP (3 Tracks).



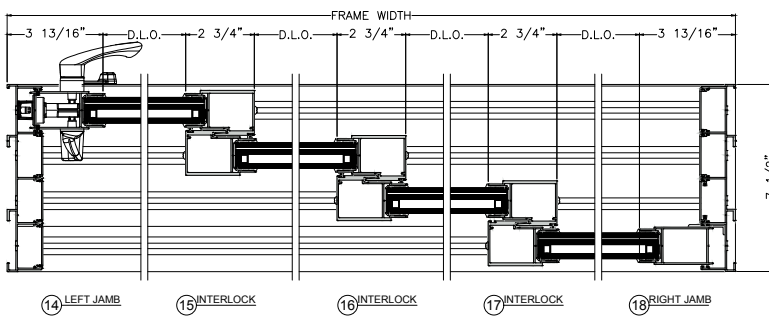
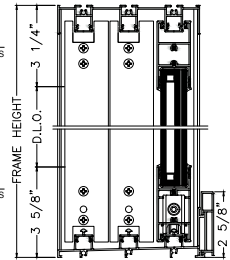
- 1 HEAD SLIDING PANEL WITH SCREEN
- 2 SILL SLIDING PANEL WITH SCREEN



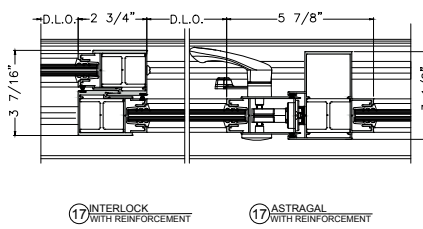
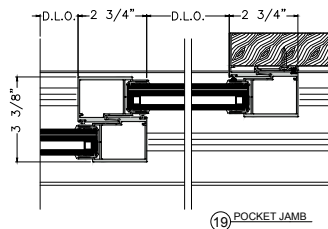
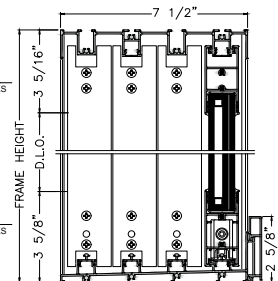
- 1A HEAD FIXED PANEL
- 2A SILL FIXED PANEL



- 6 HEAD THREE TRACKS
- 7 SILL THREE TRACKS

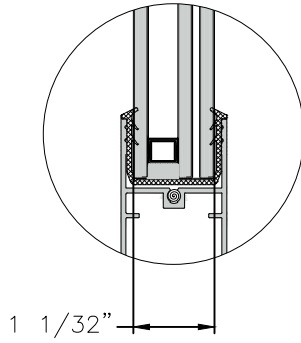


- 12 HEAD FOUR TRACKS
- 13 SILL FOUR TRACKS

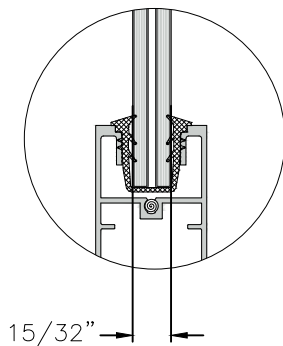


## Glazing options

### Insulating laminated glass



### Laminated glass



#### Designed for 1 1/32" Insulating laminated glass

Large missile impact:

- 3/16" Clear tempered + 3/8" air spacer + 3/16" Clear H.S + 0.090" interlayer\* + 3/16" Clear H.S
- 3/16" Clear H.S + 3/8" air spacer + 3/16" Clear H.S + 0.075" vanceva + 3/16" Clear H.S

#### Designed for 15/32" Laminated Glass

Large missile impact:

- 3/16" Clear H.S + 0.090" interlayer\* + 3/16" Clear H.S
- 3/16" Clear H.S + 0.075 vanceva + 3/16" Clear H.S

Interlayer\*: Interlayers for 0.090 interlayer glazing options could be SGP or PVB saflex.

GLASS FINISH:

PAINTED, SERIGRAPHY, DIGITAL PRINTED

For more information please contact TECNOGLASS® or visit [www.tecnoglass.com](http://www.tecnoglass.com)

## Aluminum

ALLOY 6063-T6  
ALLOY 6005-T5

For more information about aluminum and finishes consult ALUTIONS®.

## Measurements

Maximum sizes:

96" x 47" per panel.

## Sealant

APPROVED SILICONE SEALS:

WEATHERPROOFING SILICONE:

Used to seal profile unions to avoid air and water infiltration.

- Dowcorning 791 (Black-White)

STRUCTURAL SILICONE:

Besides acting as a sealant it is capable to support high loads. This silicone is commonly used to support the glass in facades and hurricane resistant products.

- Dowcorning 983
- Dowcorning 995